

Class index

Class welcome

Class & safety  
rules

Daily Math  
routine

Outcomes

Starter

Lesson  
explanation

Real Word  
Problem

Differentiation

Plenary + HOT  
question

Enrichment  
activity



EXPO  
2020  
DUBAI  
UAE

# Welcome to Math's Class Grade 3





2021

My Calendar

2022

Day

Date

Month

Year

3 4

2021

Today the weather is...



Date

weather

Sunday

Thursday

Monday

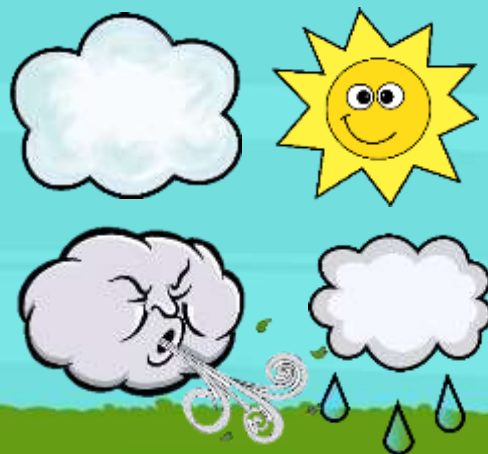
Friday

Tuesday

Saturday

Wednesday

3 2 1  
6 5 4  
9 8 7  
3 2 1  
0



January

February

March

April

May

June

July

August

September

October

November

December





Class index

Class welcome

Class & safety  
rules

Daily Math  
routine

Outcomes

Starter

Lesson  
explanation

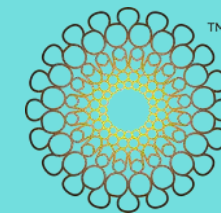
Real Word  
Problem

Differentiation

Plenary + HOT  
question

Enrichment  
activity

## Daily Basic Fact Question



EXPO  
2020  
DUBA  
UAE

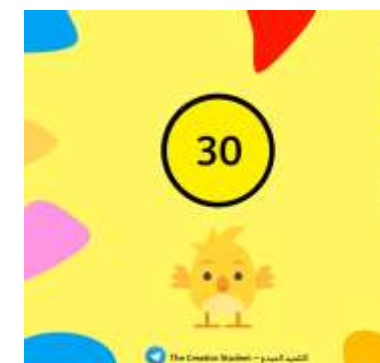
# Find the answer mentally

$$2 \times 5 = \dots\dots\dots$$

$$4 \times 8 = \dots\dots\dots$$

**Send Your answer on the Chat Box**

**The first 3 students will get ★ star on LMS**

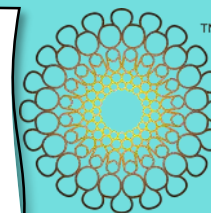




## Unit 9-Lesson 2:

# Divide by 2

## Lesson 9.2 :divide by 2



### Objectives:

- I can use related multiplication facts to recall division facts with 2.
- I can describe strategies used to recall division facts with 2.

### vocabulary...

- fact family
- fact triangle
- quotient
- unknown

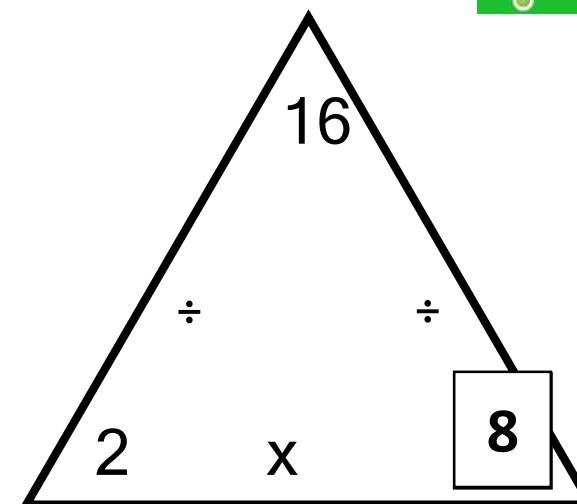
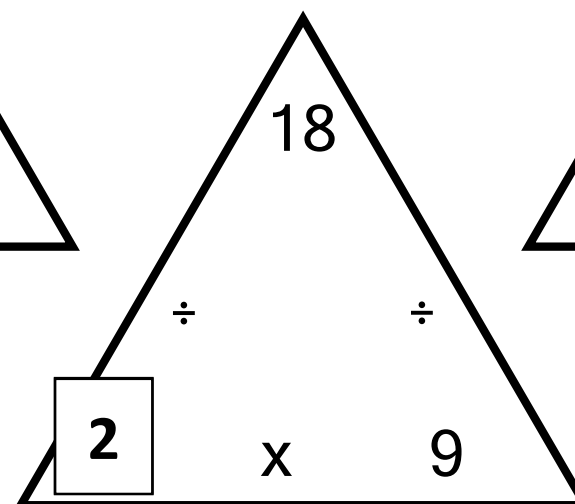
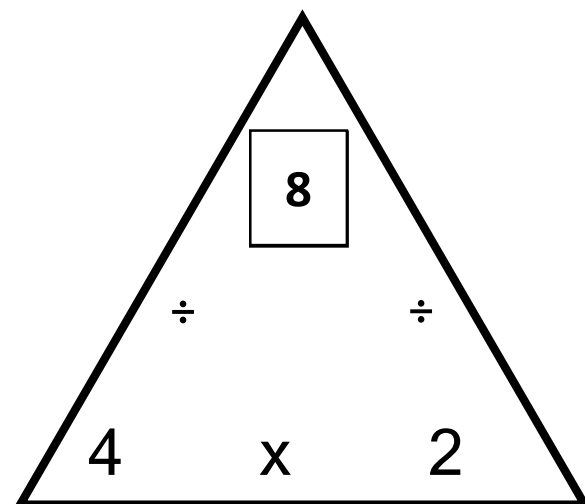


# Review



EXPO  
2020  
DUBAI  
UAE

Fill in the missing numbers, then make your own multiplication and division number triangle and test a friend.

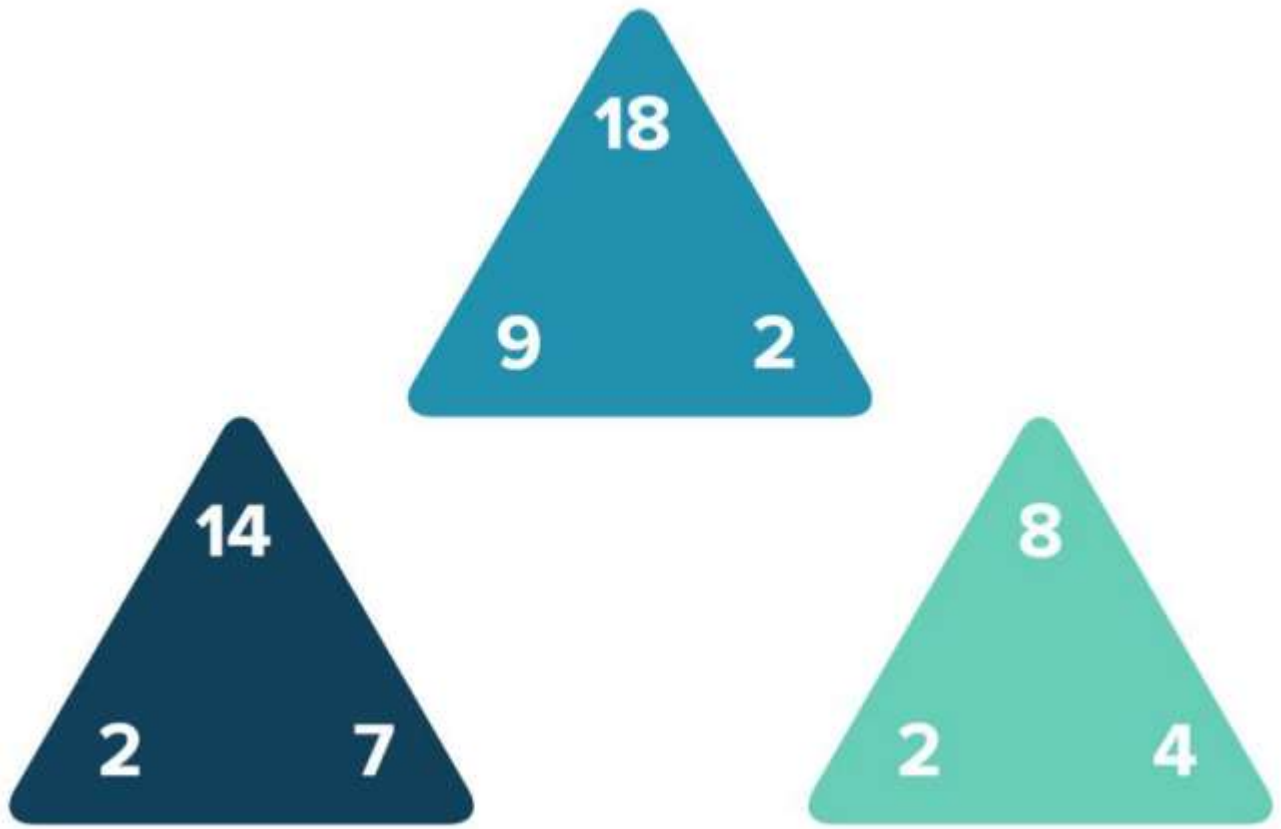


Answers



|                        |
|------------------------|
| Class index            |
| Class welcome          |
| Class & safety rules   |
| Daily Math routine     |
| Outcomes               |
| <b>Starter</b>         |
| Lesson explanation     |
| Real Word Problem      |
| Differentiation        |
| Plenary + HOT question |
| Enrichment activity    |

**Tell me everything you can.**



**Think**



**Pair**



**Share**

**01:00**

**Class index**

**Class welcome**

**Class & safety  
rules**

**Daily Math  
routine**

**Outcomes**

**Starter**

**Lesson  
explanation**

**Real Word  
Problem**

**Differentiation**

**Plenary + HOT  
question**

**Enrichment  
activity**

**Now lets watch this video**







Class index

Class welcome

Class & safety  
rules

Daily Math  
routine

Outcomes

Starter

Lesson  
explanation

Real Word  
Problem

Differentiation

Plenary + HOT  
question

Enrichment  
activity

Think and use correct word to solve

$$16 \div 2 = 8$$

divide

quotient

dividend

divisor

Class index

Class welcome

Class & safety  
rules

Daily Math  
routine

Outcomes

Starter

Lesson  
explanation

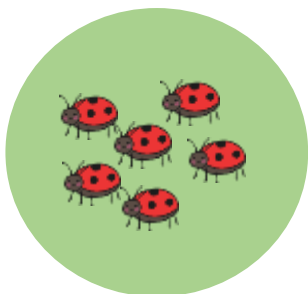
Real Word  
Problem

Differentiation

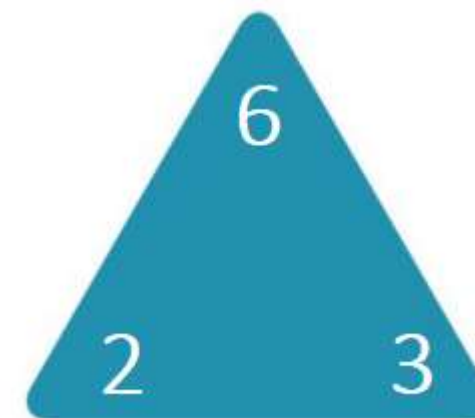
Plenary + HOT  
question

Enrichment  
activity

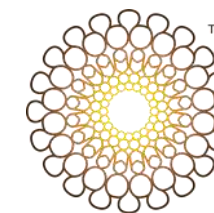
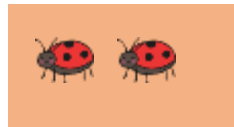
$$2 \times 3 = 6$$



Or use a fact tringle



$$6 \div 3 = 2$$



EXPO  
2020  
DUBAI  
UAE

Class index

Class welcome

Class & safety  
rules

Daily Math  
routine

Outcomes

Starter

Lesson  
explanation

Real Word  
Problem

Differentiation

Plenary + HOT  
question

Enrichment  
activity

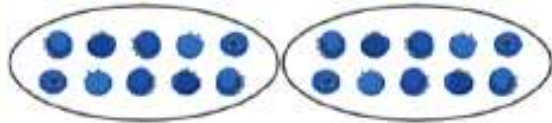
## Learn

Kobe has 20 blueberries and 18 raspberries.  
He divides the berries evenly between 2 bowls.

How many of each berry does Kobe put in each bowl?

► **One Way** Draw a model.

$$20 \div 2 = ?$$



Think of a related multiplication  
fact.

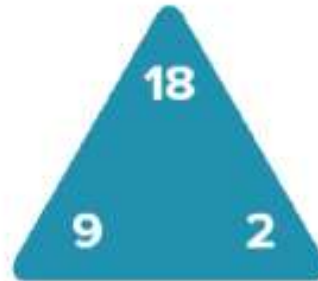
$$2 \times 10 = 20$$

$$20 \div 2 = 10$$

Kobe puts 10 blueberries in  
each bowl.

► **Another Way** Use a fact triangle.

$$18 \div 2 = ?$$



Use a related multiplication fact.

$$2 \times 9 = 18$$

$$18 \div 2 = 9$$

Kobe puts 9 raspberries in  
each bowl.

The relationship between multiplication  
and division can be used to divide by 2.

**Math is...** Generalizations

How are multiplying by 2  
and dividing by 2 related?



We Do

Page 82





Class index

Class welcome

Class & safety  
rules

Daily Math  
routine

Outcomes

Starter

Lesson  
explanation

Real Word  
Problem

Differentiation

Plenary + HOT  
question

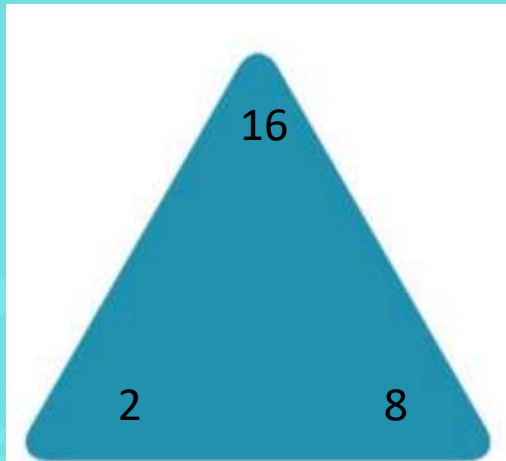
Enrichment  
activity

## Work Together

Kobe also has 16 strawberries that he needs to divide equally between the 2 bowls. How many strawberries should he put in each bowl? Explain your strategy.

8 strawberries,  $16 \div 2 = 8$

82 Lesson 2 • Divide by 2



use a fact tringle



We Do

Page 82



Class index

Class welcome

Class & safety  
rules

Daily Math  
routine

Outcomes

**Starter**

Lesson  
explanation

Real Word  
Problem

Differentiation

Plenary + HOT  
question

Enrichment  
activity

# Multiply by 2



<https://wordwall.net/resource/24439191>

Choose related multiplication fact

$$14 \div 2 = 7$$

$$7 \times 2 = 14$$

$$35 \times 7 = 5$$

$$3 \times 2 = 6$$

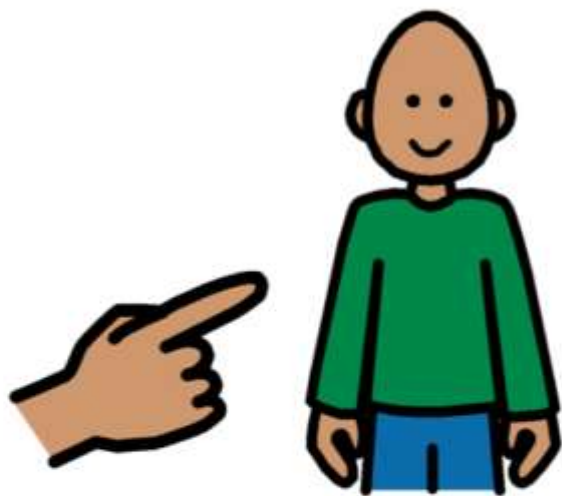
$$6 \div 2 = 3$$

$$3 \div 6 = 2$$

# Does this make sense?







your turn



## On My Own

Name \_\_\_\_\_



1. Which equations can help you find the unknown ?  
Circle all the correct answers.

$$14 \div 2 = ?$$

$$14 \times 2 = ?$$

$$? \times 2 = 14$$

$$14 = 2 \times ?$$

$$? \times 2 = 2$$

2. Draw a line to the number that makes each equation true.

$$20 \div 2 = ?$$

**10**

$$4 \div 2 = ?$$

**8**

$$16 \div 2 = ?$$

**3**

$$6 \div 2 = ?$$

**2****Page 83**

## On My Own

Name \_\_\_\_\_



What number makes the equation true?

Write a related multiplication equation to help you.

$$3. \quad 12 \div 2 = \underline{6}$$

$$2 \times 6 = 12$$

$$5. \quad \underline{9} = 18 \div 2$$

$$2 \times 9 = 18$$

$$7. \quad 2 \div 2 = \underline{1}$$

$$1 \times 2 = 2$$

$$4. \quad \underline{4} = 8 \div 2$$

$$4 \times 2 = 8$$

$$6. \quad 20 \div 2 = \underline{10}$$

$$2 \times 10 = 20$$

$$8. \quad 14 \div 2 = \underline{7}$$

$$2 \times 7 = 14$$

9. What number completes the division equation? Write a related multiplication fact and draw a model to show your work.

$$10 \div 2 = ? \underline{5}$$

$$5 \times 2 = 10$$

Page 83



Class index

Class welcome

Class & safety  
rules

Daily Math  
routine

Outcomes

**Starter**

Lesson  
explanation

Real Word  
Problem

Differentiation

Plenary + HOT  
question

Enrichment  
activity

# Multiply by 2



<https://wordwall.net/resource/5766646>



## On My Own

Name \_\_\_\_\_



10. Jin is finding the unknown in the equation  $16 \div ? = 2$ . What multiplication fact can help him find the unknown ? Explain.

$2 \times 8 = 16$ , so the unknown is 8

11. Priya has an even number of stickers. She gives half of her stickers to Brock. Write an equation to represent the number of stickers Priya and Brock each might have. Explain.

$? \div 2 = 5$ , half means divide by 2

Page 84



## On My Own

Name \_\_\_\_\_

**12. STEM Connection** Malik plans to work with fiber optic cables when he is an engineer. One cable is 20 meters long. Malik needs to divide it in half. What is the length of each half? Explain the strategy you used.



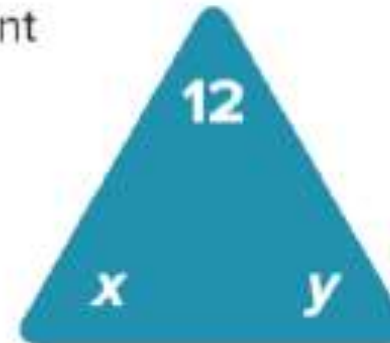
EXPO  
2020  
DUBAI  
UAE

Page 84

$20 \div 2 = ?$ , so each part is 10 meters

**13. Extend Your Thinking** Can the unknowns represent more than one pair of whole numbers? Explain.

*It could be 3 and 4  
or 2 and 6*



Class index

Class welcome

Class & safety  
rules

Daily Math  
routine

Outcomes

Starter

Lesson  
explanation

Real Word  
Problem

Differentiation

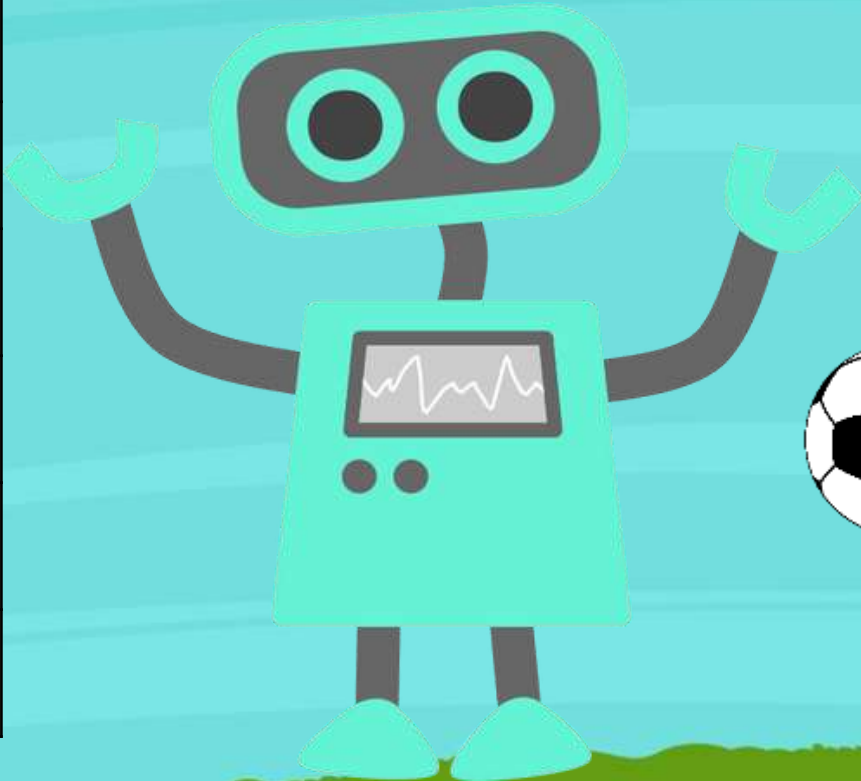
Plenary + HOT  
question

Enrichment  
activity



# ball games

## In the chat





Copyright@creative\_path



$2 \times 2$



$5 \times 2$



$8 \times 2$



$2 \times 10$



$7 \times 2$



$6 \times 2$



$9 \times 2$



$1 \times 2$



$4 \times 2$



$3 \times 2$



Class index

Class welcome

Class & safety  
rules

Daily Math  
routine

Outcomes

Starter

Lesson  
explanation

Real Word  
Problem

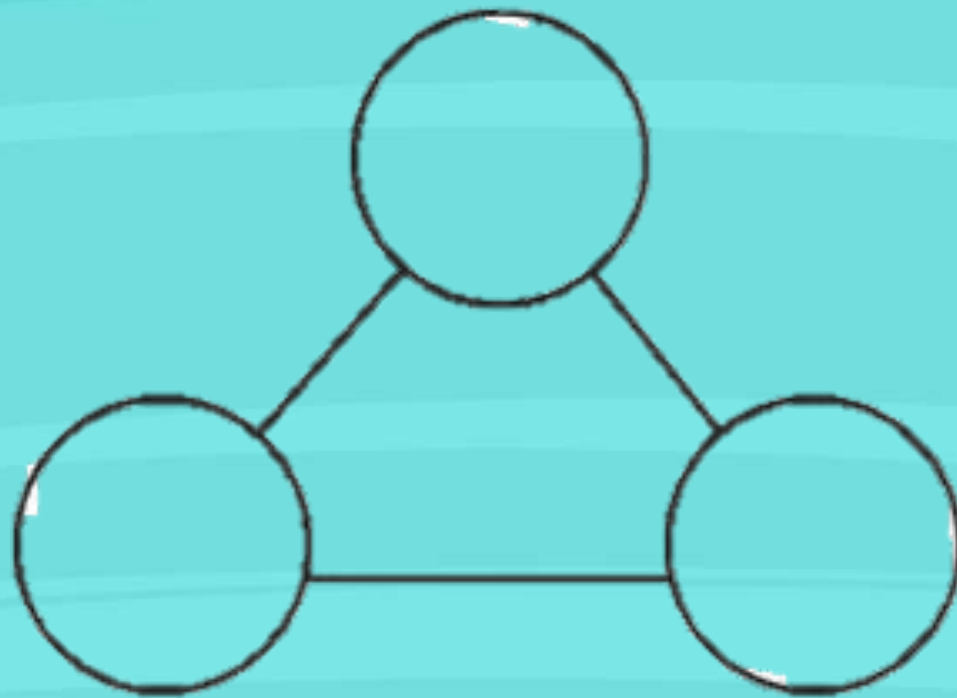
Differentiation

Plenary + HOT  
question

Enrichment  
activity

## Self Assessment

I can write my own fact family in  
Multiplication and division.



**I can do it and teach it to  
someone**



**I can do it but not teach it**



**I need to practice it more**



**I didn't get it**



Find the answer :  $12 \div 2 = \dots$



9

3

6

$$18 \div 2 = \dots$$

9



8