

Module 2 body systems (Lesson 1 levels of organization)

1. Which of the following is the correct order of organization in living things from most basic (simple) to most complex?

- a. Organism, cell, tissue, organ, organ system
- b. Organ system, organ, tissue, cell, organism
- c. Cell, tissue, organ, organ system, organism
- d. Cell, organ, tissue, organ, organism, organ system

2. The basic unit of structure and function in the human body is the.....

- a. organ
- b. cell
- c. organ system
- d. tissue

3. A group of similar cells that come together to perform a specific function is a/an.....

- a. organ
- b. organ system
- c. organism
- d. tissue

4. When a group of organs work together to perform a particular function they create a/an...

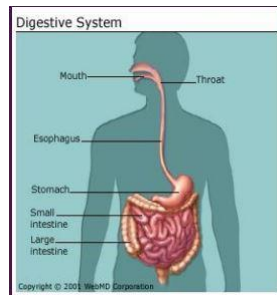
- a. organ system
- b. organism
- c. tissue
- d. organ

5. A group of tissues that perform a similar function is called _____. (Examples include the heart, lungs or stomach)

- a. organ system
- b. tissues
- c. organs**
- d. cells

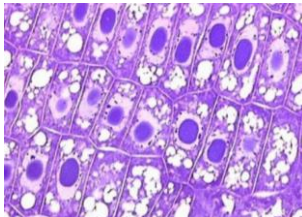
6. This is a example of.....

- a. tissue
- b. cells
- c. organ
- d. organ system**



7. This is a example of

- a. cell
- b. tissue**
- c. organ
- d. organ system



8. What level of organization is formed when different kinds of tissue work together?

- a. cell
- b. organ system
- c. tissue
- d. organ**

9. The brain is made up of many tissues. This information can be used to determine that the brain is

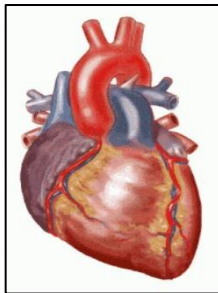
- a. unicellular
- b. multicellular**
- c. part of bacteria
- d. able to function independently.

10. A group of cells that have similar functions? Examples are nervous, epithelial, muscle and connective.

- a. cells
- b. organs
- c. tissues**
- d. atoms

11. This is a example of

- a. cell
- b. tissue
- c. organ system
- d. organ**



11. What larger part of the body do you think cells make up ?

- a. cells
- b. tissues**
- c. atoms
- d. organ system

12. Animals have main types of tissues

- a. 1
- b. 2
- c. 3
- d. 4

13. is Forms the protective outer layer of the skin and the internal lining of the body.

- a. Nervous tissue
- b. Epithelial tissue
- c. Muscle tissue
- d. Connective tissue

14. is Carries messages to and from the brain.

- a. Nervous tissue
- b. Epithelial tissue
- c. Muscle tissue
- d. Connective tissue

15. is provides structure and support and connects other types of tissues.

- a. Nervous tissue
- b. Epithelial tissue
- c. Muscle tissue
- d. Connective tissue

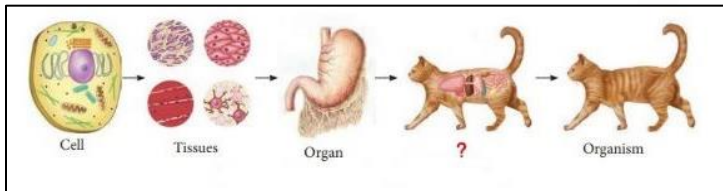
16. The process by which one cell becomes a different type of cell is called

- a. cell
- b. cell differentiation**
- c. organ
- d. organ system

17. Plants have main types of tissues

- a. 1
- b. 2
- c. 3**
- d. 4

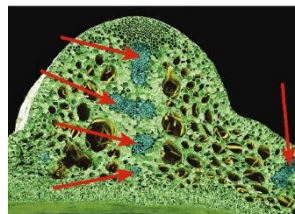
18. The following diagram shown



- a. nervous system.
- b. digestive system.**
- c. respiratory system.
- d. cardiovascular system.

18. look to the following photo the arrows shown

- a. dermal tissue.
- b. ground tissue.
- c. vascular tissue.**
- d. epithelial tissue



18. is not type of animals tissue .

- a. epithelial tissue
- b. muscle tissue
- c. connective tissue
- d. vascular tissue

19. Which human tissue is most similar in function to dermal tissue in plants?

- a. muscle tissue
- b. epithelial tissue
- c. connective tissue.
- d. vascular tissue.

20. What is the difference between a cell and a tissue?

- a. cell is basic unit of life ; tissue is group of similar type of cells that work as one.
- b. cell is group of tissues; tissue is basic unit of life.
- c. cell is basic unit of life; tissue is groups of different cells.
- d. cell is group of organ; tissue is group of different cells.

21. is an organ specialized for breaking down food.

- a. eyes
- b. stomach
- c. heart
- d. brain

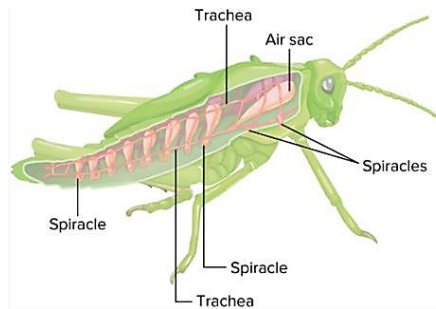
22. food and water are transported throughout the plant by the

- a. root system.
- b. digestive system.
- c. shoot system.
- d. respiratory system.

23. The diagram shows the structures involved in respiration for a grasshopper.

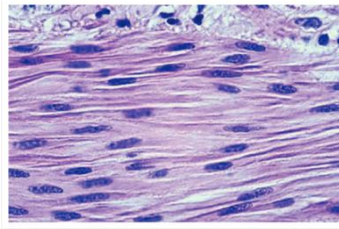
These structures are an example of which level of organization within an organism?

- a. the structure make up an organelle.
- b. the structures make up a specialized cell.
- c. the structures make up a tissue.
- d. the structures make up an organ system.**



23. Which type of tissue the photo shown?

- a. connective tissue.
- b. muscle tissue.**
- c. epithelial tissue.
- d. nervous tissue.



24. Cade is making a presentation on the way systems are organized in plants and animals for his science class. He prepared this flowchart to illustrate his presentation?



After further study, Cade realized his flowchart was incorrect. Which change should he make to correct the flowchart?

- a. add the phrase Cell Membranes.
- b. switch Organs and Tissues.**
- c. remove Tissues and Cells.
- d. switch Organs and Cells.