

Student Name: _____ Class: _____ Date: _____

A.Fill in the blanks using the available answer choices:

Extinction - fossil - cast

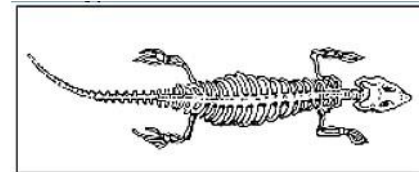
- 1) A **Fossils** is a trace of the remains of a living thing that died long ago.
- 2) **Extinction** is when there is no more of an organism's kind left on Earth.
- 3) A **cast** is a model that is created when an imprint of a fossil is filled with a new material.

B.Choose the appropriate letters A, B, C or D:

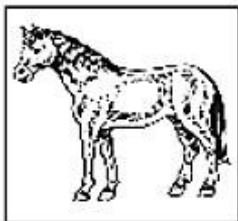
1. A fossil is what is left of a living thing from the _____.

- A. future B. present C. **past** D. yesterday

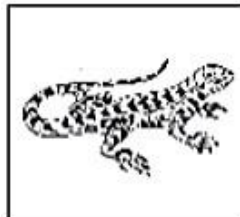
2. What type of animal does the fossil in the picture look like?



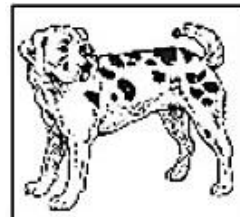
A.



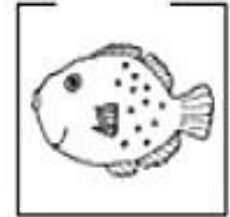
B.



C.



D.



3. Which is **not** a fossil?

a.



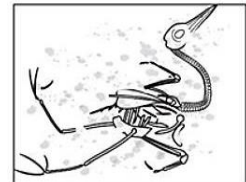
B.



C.



D



C.Identify the fossil given below:

A.



Trace fossils

B.



Cast and Mold

C.



Preserved remains(Amber fossils)

D.Read the sentences given below and identify whether they are true (✓)or false (X):

1. Fossils can tell us how the **Earth's environment has changed** over time.

- a. True b. False

2. Some fossils give **clues about a living thing's size, shape, and environment.**

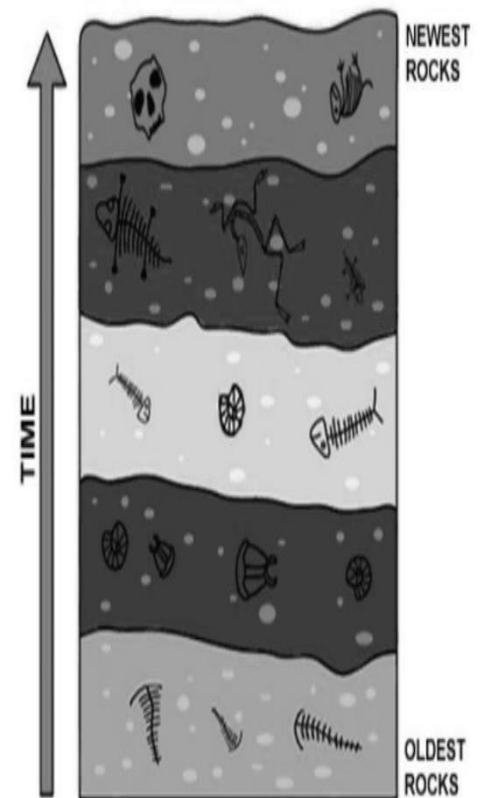
- a. True b. False

3. Fossils found **closest to the surface** are usually the old.

- a. True b. False

4. Scientists learn about **Earth's past** by studying fossils.

- a. True b. False



Fossil layers