



Term 1

العين Al Ain

Name: _____ Date: _____ Grade: _____

Science practice test 1

Question 1:

Circle the correct answer:

What is the second step in the scientific method?



a) Ask a question

b) Observation

c) Conclusion

Question 2:

Circle the correct answers:

Which rule is the student breaking in the lab?



a) Writing

b) Reading

c) Running

Question 3:

Circle 3 things that living things need to survive?

- a) Food
- b) Water
- c) Table
- d) Gases

Question 4:

Circle the correct answer:

The instrument that we use to see cells is called a:

- a) hand lens
- b) microscope
- c) thermometer
- d) beaker

Question 5:

Fill in the missing words. Use the words below to help you

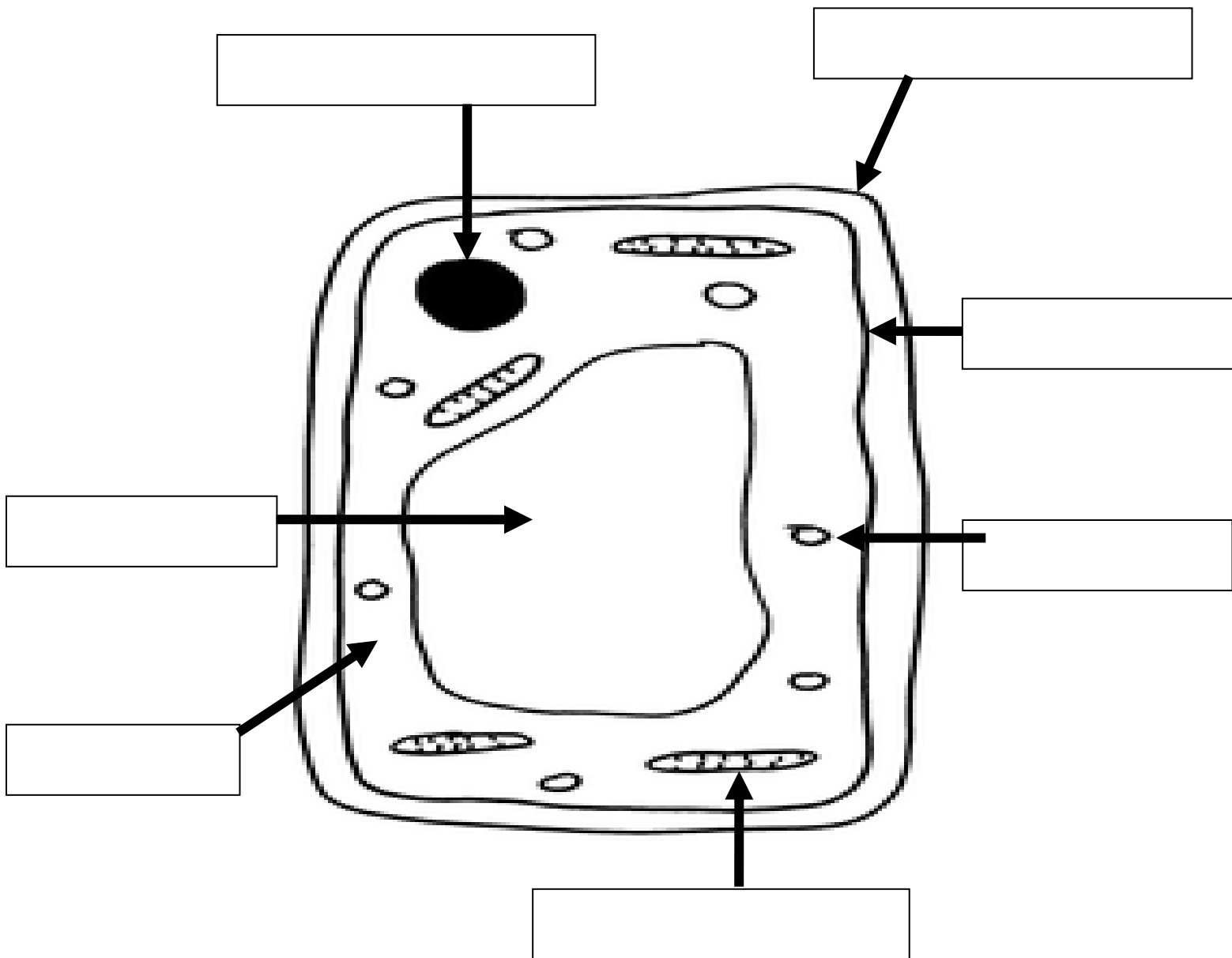
chloroplasts	cell wall	different	nucleus
--------------	-----------	-----------	---------

Animal cells and plant cells are _____. The plant cell has _____ and a _____. The _____ is the brain of the cell.

Question 6:

Label the plant cell using the words below to help you:

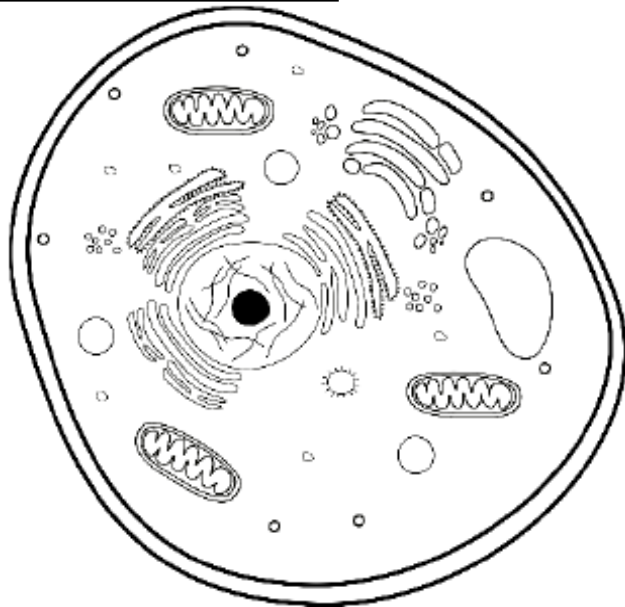
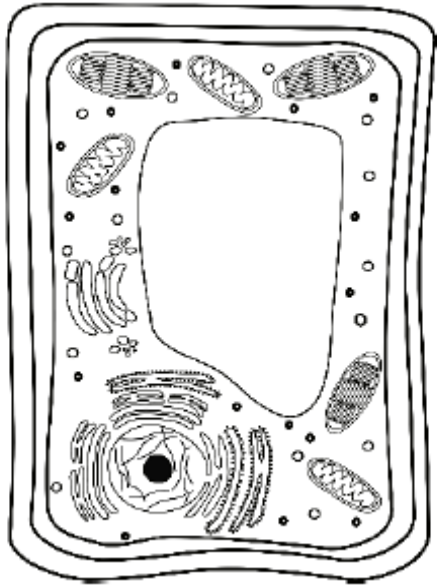
- | | | |
|-------------|-----------|---------------|
| Cell wall | Nucleus | Mitochondria |
| Chloroplast | Cytoplasm | Cell membrane |
| Vacuole | | |



Question 8:

Label using the words in the block:

Animal cell Plant cell



Question 9:

Fill in the genus and species:

The lion's scientific name is ***Panthera Leo***

Genus	Species

Question 10

Circle the correct answer:

Which statement about the number of species is true?

- a) Kingdoms contain the most.
- b) A phylum contains the most.
- c) Orders have the fewest.
- d) Kingdoms have the fewest.

Question 11:

Circle the correct answer:

All the organisms in this kingdom make their own food.

- a) fungi
- b) protists
- c) bacteria
- d) plants

Question 12:

Circle the correct answer:

Mushrooms are in the _____ kingdom.

- a) animals
- b) plants
- c) bacteria
- d) fungi

Question 13:

Circle the correct answer:

Which two kingdoms do **NOT** have a nucleus?

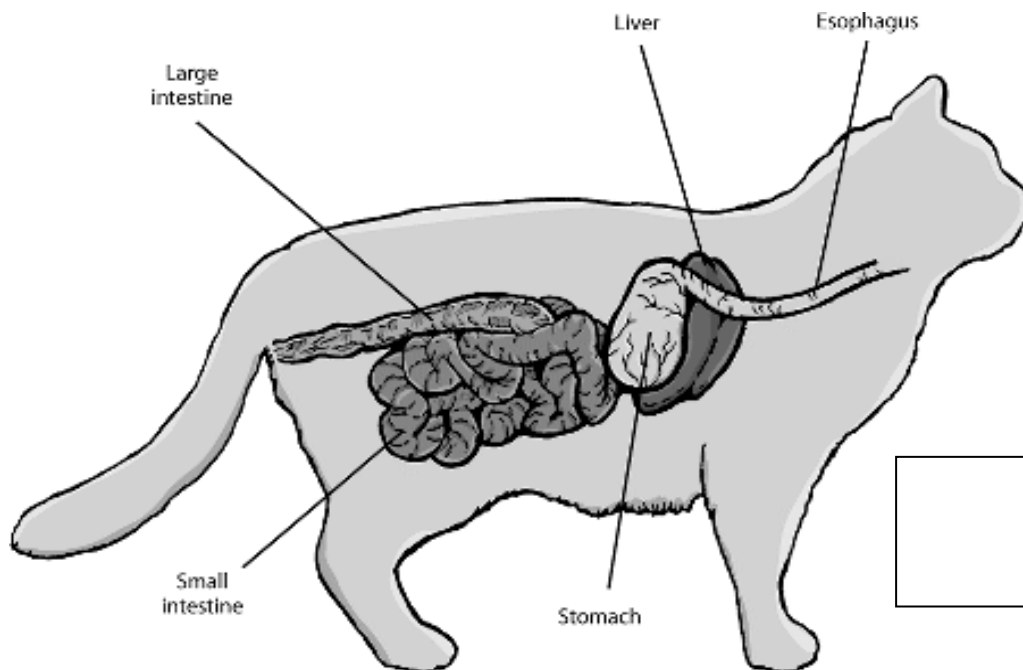
- a) fungi and plants
- b) bacteria and archaea
- c) animals and protists

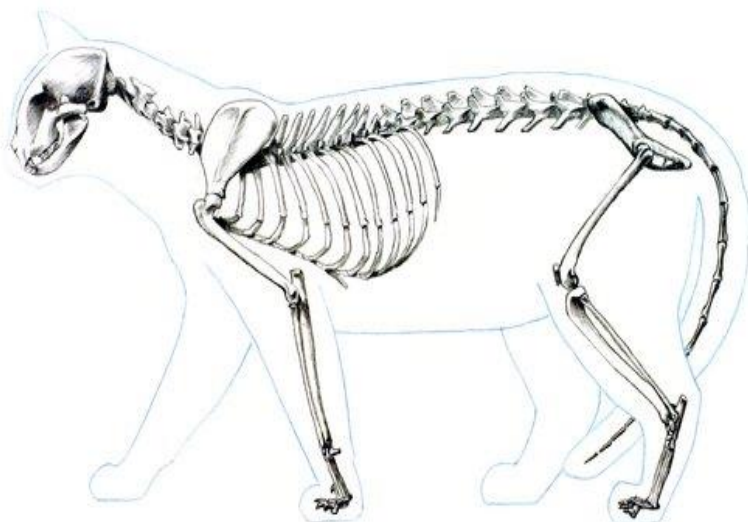
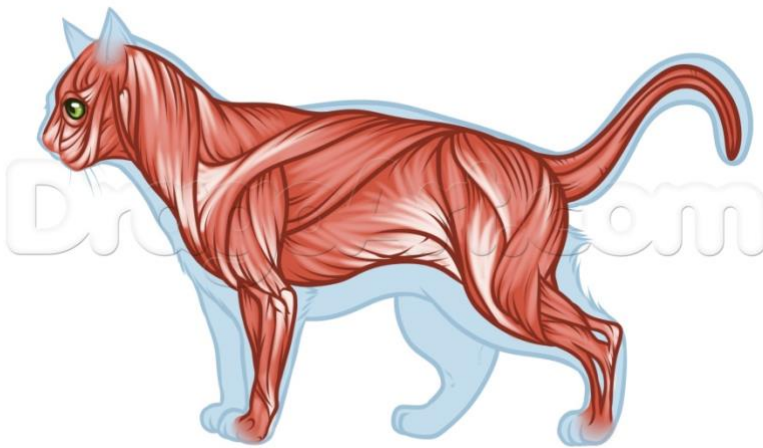
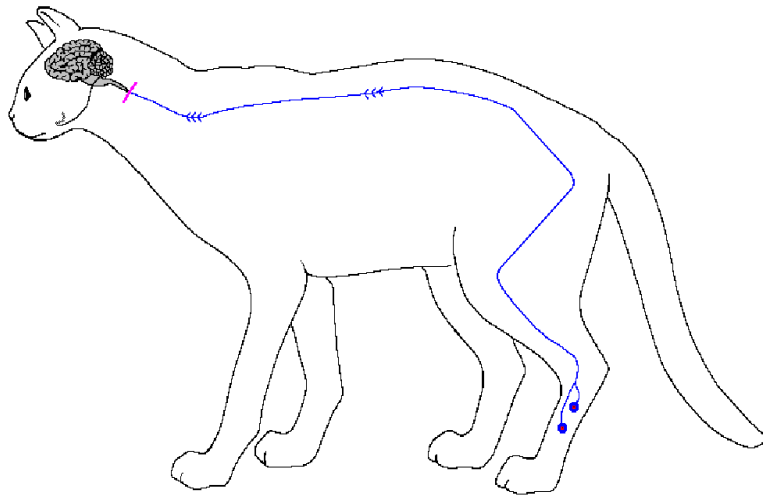
Question 14:

Name the system using the words from the block:

Nervous system
Skeletal system

Circulatory system
Respiratory system





Question 15:

Circle the correct answer:

Which system removes waste from the body?

- a) circulatory system
- b) excretory system
- c) respiratory system

Question 16:

Circle the correct answer

The system that helps animals to breathe is called the:

- a) circulatory system
- b) excretory system
- c) respiratory system

Question 17




Circle true or false:

- a) Butterflies go through **complete** metamorphosis. True or False
- b) Damselflies go through **incomplete** metamorphosis True or False
- c) A clone is not an exact copy of its parent True or False

Question 18

Fill in the table using the words below:

What kind of reproduction is happening in each picture?

Budding	Fertilization	Regeneration
 A photograph of a green hydra, a simple tubular animal with tentacles at the top and a foot at the bottom. A small, identical-looking hydra is budding from the side of the main one. A label 'hydra' is in the top left corner. <p>hydra</p>		
 A photograph of a red sea star with five arms, resting on a rocky seabed. A label 'sea star' is in the top left corner. <p>sea star</p>		
 A close-up photograph of several large, orange, oval-shaped fish eggs. One egg in the upper right has a dark spot. A label 'fish eggs' is in the top left corner. <p>fish eggs</p>		

Question 19

Write down an example of an **animal** that reproduces with **two** parents?

Question 20:

Put the stages of a butterfly's life cycle in order.

Number it from 1 to 4:

butterfly 

Pupa 

caterpillar 

eggs 

Question 21

Look at the picture and write down whether the picture you see is a

learned behavior or an inherited behavior.

a)



b)

