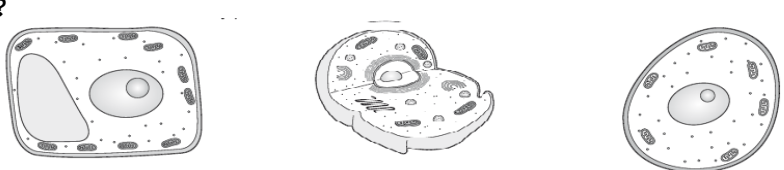
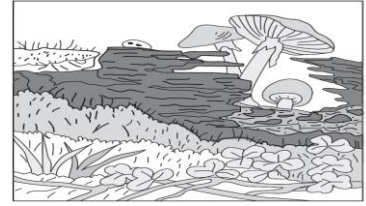


1. The smallest unit of living matter is	A. Cells	B. Atoms	C. organism
2. A gas in air and water. We need it to live	A. Carbon	B. Oxygen	C. Nitrogen
3. A living thing that carries out 5 basic life functions	A. organism	B. Tissue	C. Phylum
4. The largest group. There are 6 Kingdoms	A. Genus	B. Family	C. Kingdom
5. A characteristic of a living thing	A. Trait	B. Species	C. Order
6. Most plant cells have a green parts called	A. Cells	B. Chloroplast	C. Mitochondrion
7. Give the cell a shape walls is	A. Nucleus	B. Chloroplast	C. Cell walls
8. Tissues group together to form a(n).....	A. Phylum	B. Organ	C. Cell
9. A group of similar cells that do a job together is called.....	A. Tissue	B. Nucleus	C. Order
10. Anything that can carry out the five basic life functions is.....	A. Species	B. organism	C. Family
11. To see most cells you need to use a.....	A. Microscope	B. Telescope	C. Glasses
12. This controls all activities.	A. Cell wall	B. Nucleus	C. Energy
13. Structure protects and supports the plant cell is called	A. Mitochondrion	B. Tissue	C. Cell wall
14. Which of these parts is only in plant cells?	A. Chloroplast	B. Chromosome	C. Mitochondrion
15. Even smaller than cells are	A. Bacteria's	B. Viruses	C. Vacuoles
16. Filling the cell is a substance that is like jelly is called	A. Cytoplasm	B. Cell membrane	C. Genus
17. Scientists divide living things into Kingdoms.	A. Three	B. Six	C. Five
18. Which one is NOT a microorganism?	A. Archaea	B. Protist	C. Fern
19. What is true of all living things? They	A. Have tissues	B. can move	C. Use energy
20. Which of these do your cells contain?	A. Cell wall	B. Cytoplasm	C. Chloroplast
21. The phylum is larger than the class.	True		False
22. The nucleus of a cell burns food and releases energy.	True		False
23. Mosses and ferns reproduce using seeds.	True		False
24. Which of these most likely shows a model of a plant cell?			

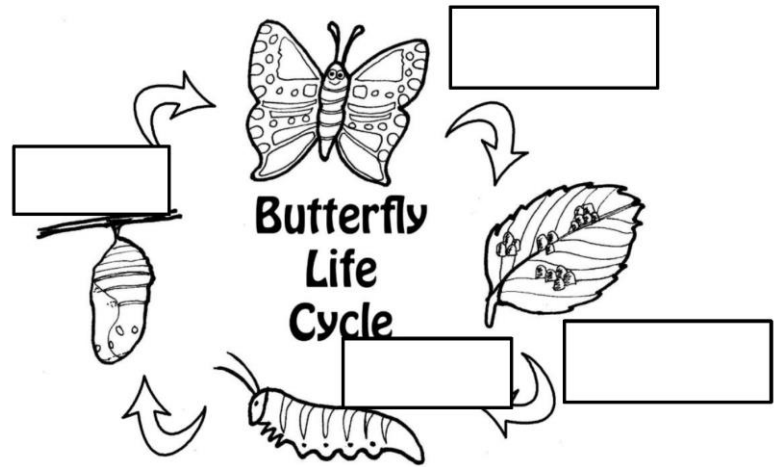
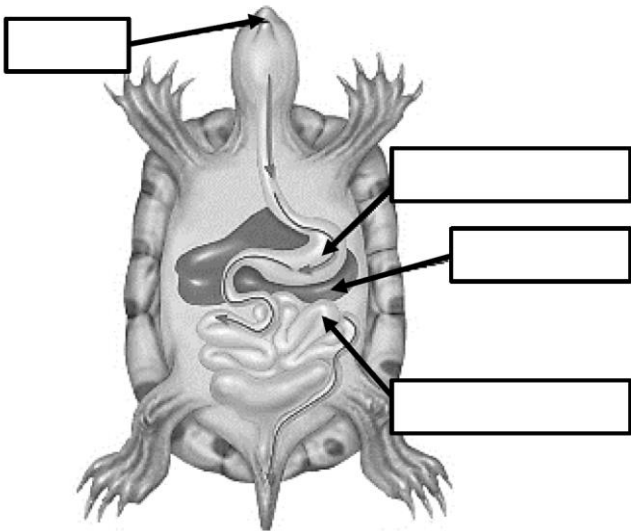
25. In some ways mushrooms are similar to plants.

What makes mushrooms different from plants ?

- A. Mushrooms cannot make their own food.
- B. Mushrooms cannot reproduce.
- C. Mushrooms cells don't have cell walls.



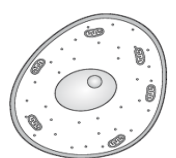
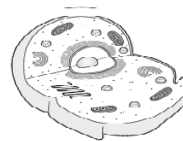
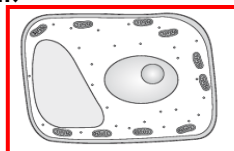
1. protect organs, keep upright	A. Skeletal	B. Nervous	C. Respiratory
2. Pull on bones to help you move.	A. Muscular	B. Circulatory	C. Excretory
3. Helps you see, hear, feel, smell, taste	A. Skeletal	B. Nervous	C. Muscular
4. Moves oxygen into the body and carbon dioxide out	A. Excretory	B. Respiratory	C. Muscular
5. carries blood, food and waste around the body	A. Skeletal	B. Nervous	C. Circulatory
6. removes waste from the body	A. Excretory	B. Respiratory	C. Muscular



1. Differences among members of the same specie	A. Variations	B. Extinct	C. Natural selection
2. An organism with favorable variations survive and pass its traits on to its offspring.	A. Natural selection	B. Adaptations	C. Hibernates
3. When the last of a species dies	A. Adaptations	B. Variations	C. Extinct
4. Physical characteristics that help living things survive in its environment	A. Camouflage	B. Mimicry	C. Adaptations
5. live of body fat and use very little energy (sleep)	A. Hibernates	B. Extinct	C. Natural selection
6. When animals blend in with their environment and are hard to see	A. Variations	B. Camouflage	C. Adaptations
7. When an animal looks like another so that it won't be eaten.	A. Mimicry	B. Extinct	C. Natural selection

1. The smallest unit of living matter is	A. Cells	B. Atoms	C. organism
2. A gas in air and water. We need it to live	A. Carbon	B. Oxygen	C. Nitrogen
3. A living thing that carries out 5 basic life functions	A. organism	B. Tissue	C. Phylum
4. The largest group. There are 6 Kingdoms	A. Genus	B. Family	C. Kingdom
5. A characteristic of a living thing	A. Trait	B. Species	C. Order
6. Most plant cells have a green parts called	A. Cells	B. Chloroplast	C. Mitochondrion
7. Give the cell a shape walls is	A. Nucleus	B. Chloroplast	C. Cell walls
8. Tissues group together to form a(n).....	A. Phylum	B. Organ	C. Cell
9. A group of similar cells that do a job together is called.....	A. Tissue	B. Nucleus	C. Order
10. Anything that can carry out the five basic life functions is.....	A. Species	B. organism	C. Family
11. To see most cells you need to use a.....	A. Microscope	B. Telescope	C. Glasses
12. This controls all activities.	A. Cell wall	B. Nucleus	C. Energy
13. Structure protects and supports the plant cell is called	A. Mitochondrion	B. Tissue	C. Cell wall
14. Which of these parts is only in plant cells?	A. Chloroplast	B. Chromosome	C. Mitochondrion
15. Even smaller than cells are	A. Bacteria's	B. Viruses	C. Vacuoles
16. Filling the cell is a substance that is like jelly is called	A. Cytoplasm	B. Cell membrane	C. Genus
17. Scientists divide living things into Kingdoms.	A. Three	B. Six	C. Five
18. Which one is NOT a microorganism?	A. Archaea	B. Protist	C. Fern
19. What is true of all living things? They	A. Have tissues	B. can move	C. Use energy
20. Which of these do your cells contain?	A. Cell wall	B. Cytoplasm	C. Chloroplast
21. The phylum is larger than the class.	True		False
22. The nucleus of a cell burns food and releases energy.	True		False
23. Mosses and ferns reproduce using seeds.	True		False

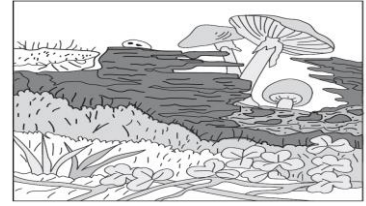
24. Which of these most likely shows a model of a plant cell?



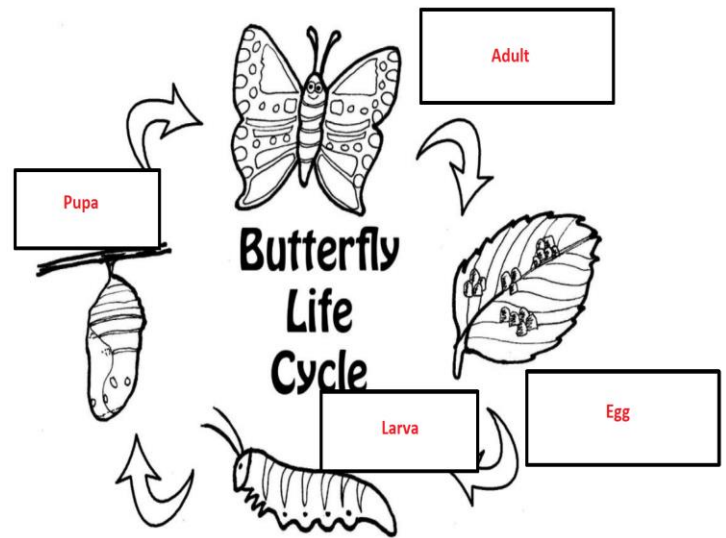
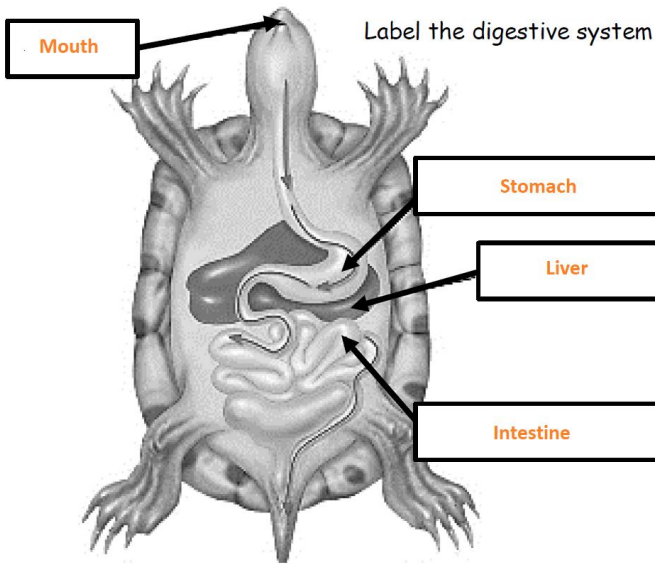
25. In some ways mushrooms are similar to plants.

What makes mushrooms different from plants?

- A. Mushrooms cannot make their own food.
- B. Mushrooms cannot reproduce.
- C. Mushrooms cells don't have cell walls.



1. protect organs, keep upright	A. Skeletal	B. Nervous	C. Respiratory
2. Pull on bones to help you move.	A. Muscular	B. Circulatory	C. Excretory
3. Helps you see, hear, feel, smell, taste	A. Skeletal	B. Nervous	C. Muscular
4. Moves oxygen into the body and carbon dioxide out	A. Excretory	B. Respiratory	C. Muscular
5. carries blood, food and waste around the body	A. Skeletal	B. Nervous	C. Circulatory
6. removes waste from the body	A. Excretory	B. Respiratory	C. Muscular



1. Differences among members of the same specie	A. Variations	B. Extinct	C. Natural selection
2. An organism with favorable variations survive and pass its traits on to its offspring.	A. Natural selection	B. Adaptations	C. Hibernates
3. When the last of a species dies	A. Adaptations	B. Variations	C. Extinct
4. Physical characteristics that help living things survive in its environment	A. Camouflage	B. Mimicry	C. Adaptations
5. live of body fat and use very little energy (sleep)	A. Hibernates	B. Extinct	C. Natural selection
6. When animals blend in with their environment and are hard to see	A. Variations	B. Camouflage	C. Adaptations
7. When an animal looks like another so that it won't be eaten.	A. Mimicry	B. Extinct	C. Natural selection