

Science Grade 4 Semester 1 Book Part 1 Review

NAME _____ GRADE 4/____ DATE..../11

Q1: Fill each blank with the best term from the list: for all chapters:

A- (Scientific method / experiment / hypothesis / Variable) ضع الكلمة بجوار التعريف

- 1-A process that scientists use to answer questions.
- 2-Is something that changes or varies
- 3-A statement that can be tested to answer questions.
- 4-Anis a scientific test that can be used to support a hypothesis.

B- (Cell / kingdom / viruses / organ / organism / tissue) ضع الكلمة بجوار التعريف

- 1. The smallest unit of living matter is a
- 2. The largest group into which an organism can be classified is a
- 3. Tissues group together to form a(n).....
- 4. A group of similar cells that do a job together is called
- 5. Anything that can carry out the five basic life functions is a(n)
- 6- A(n).....is a non-living particle that depends on and infects the cells of an organism.

B1: Fill in the missing words. Use the words below to help you:

(Cell wall/ chloroplasts / different / nucleus) ضع الكلمة بجوار التعريف

- 1-Animal cells and plant cells are
- 2-The plant cell hasand a.....
- 3-The is the brain of the cell.

B2: Fill in the missing words. Use the words below to help you: ضع الكلمة بجوار التعريف

(Organism / Reproduction / oxygen / controls/ chloroplast / energy).

- 1-All living things need a gas , it is found in air and in water , it is
- 2-To make more of the same kids from living things is
- 3-It carries out the five basic functions of life, thus it is an
- 4-Most plant cells have green parts called it help Plants to make Food.
- 5- A nucleus the cell activates.
- 6- Mitochondrion It gets from food.

□

B3: -Arrange from the smallest to the largest (life organization)رتب مستويات التنظيم للجسم

{ tissue cell system organ }

- 1..... 2..... 3..... 4.....

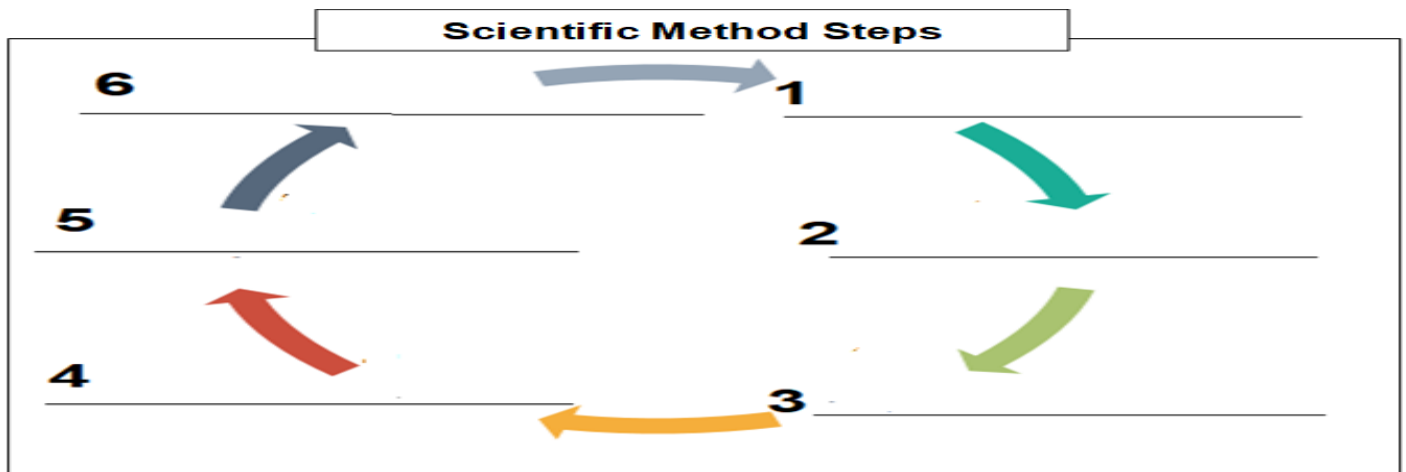
ضع الكلمة بجوار التعريف

C-(Digestive system / metamorphosis / Oxygen/ nervous system / instinct / heredity)

1. Food is broken down by the
2. Butterflies go through a process of change called
3. The brain and sense organs are part of an animal's
4. Traits are passed from parent to offspring through
5. A is a behavior that an animal does not have to learn.
- 6- Red blood cells carrythrough the body.

Q2: Reorder the scientific Method steps and write on diagram below: رتب خطوات المنهج العلمي

1. (Report your result / Test hypothesis or Experiment // drew Conclusion/ Form Hypothesis / Ask Question / Observation)



Q3 : Match group A to correct answer from Group B: ضع رقم التركيب المناسب بجوار الوظيفة

Group A

- 1-Cell wall
- 2-Mitochondrion
- 3-Nucloes
- 4-Cell Membrane
- 5-Chloroplast
- 6-Cytoplasm
- 7-Vacouls

Group B

- (.....)Food factory in plant cell has chlorophyll
- (.....)Filling cell, jelly, mostly water.
- (.....)Stores cell food, water, wastes.
- (.....)Protect & support plant cell.
- (.....)Food is burned in it to give energy.
- (.....)Controls all cell activities.
- (.....)Thin covering outside animal cell, after cell wall in plant cell.

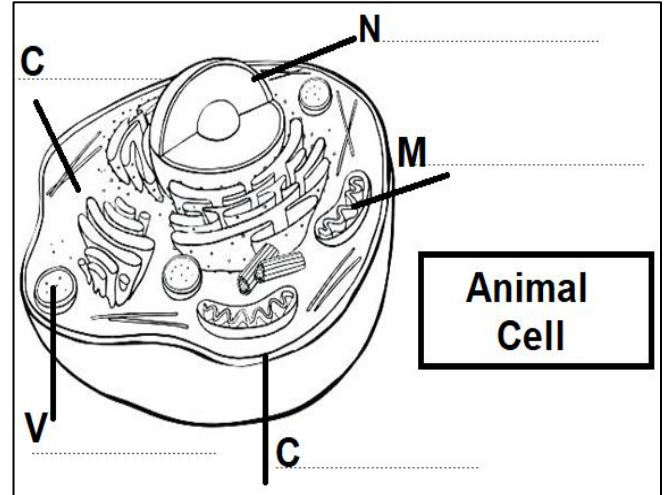
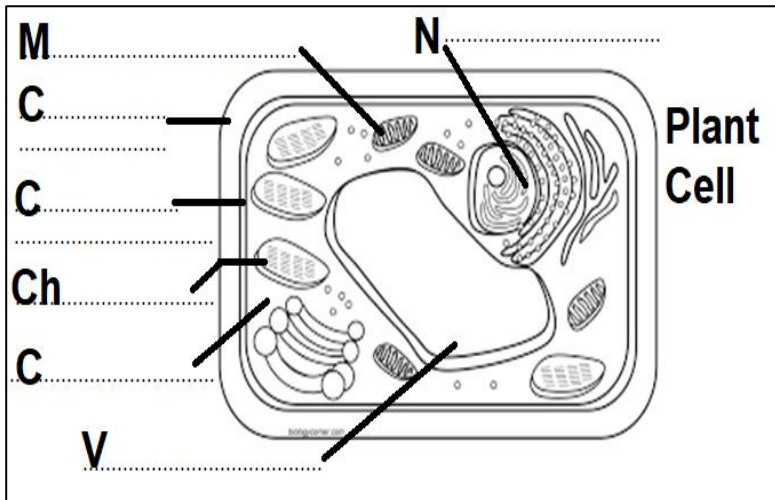
Q4 : What is these organisms' Genus and Species Name? (Binomial name) اكتب الاسم الثنائي

- 1- *Phoenix dactylifera*
- 2- *Felis catus*

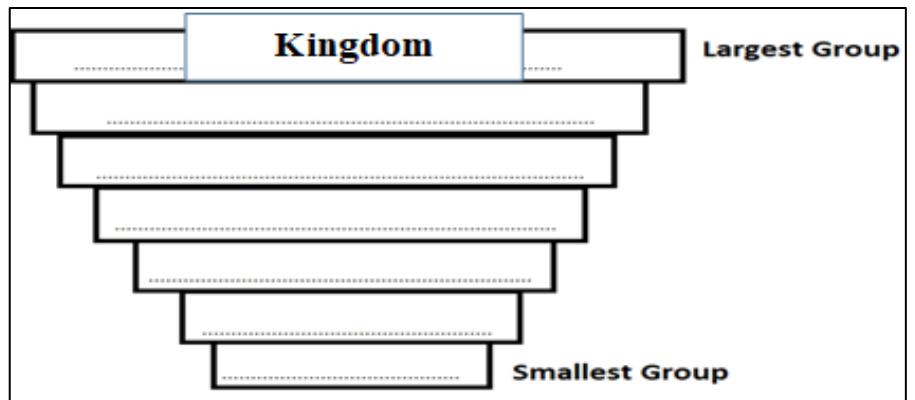
Genus		
Species		

Q5: Label the plant and animal cells using the words below to help you: ضع اسم التركيب بمكانه المناسب:

{ Cell wall/ Nucleus/ Mitochondria /Chloroplast /Cytoplasm / Cell membrane / Vacuole }





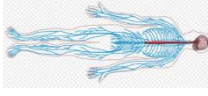
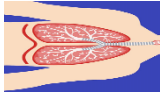
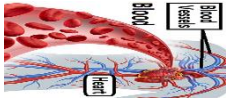
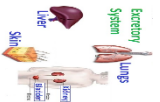

Q6 : Put the words in order of grouping from largest to smallest: رتب مستويات تنظيم المملكة: (Kingdom / Family / Species / Order / Class / Phylum / Genus)



Q B: Book 1 Page 39 the 6 Kingdom of Life اكتب اسم الممالك الست \ واكمل الجدول بشكل مناسب

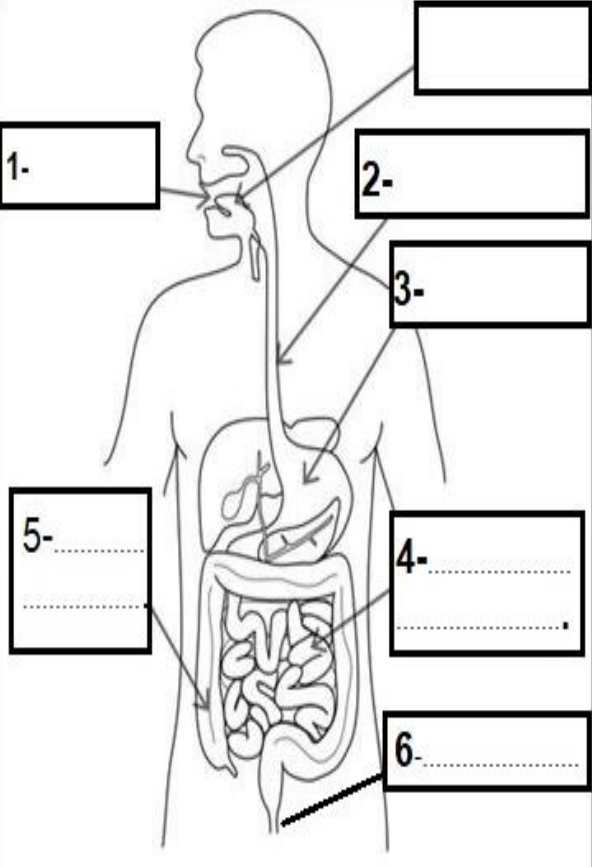
Kingdom
Number of Cell	1	1 or more	1 or more	many
Nucleus	No	yes	yes	yes
Food	Make food, get from other organisms.	Make food, get from other organisms.	Make food, get from other organisms.	get from other organisms. their own food,	get from other organisms.
Move	yes	yes	No	yes
Example		bacteria	Mushroom/ yeast	Algae/ paramecium	trees	Lion/ camel

Q7 : Write the name of system: اكتب اسم الجهاز بمكانه الصحيح

	System Name	Organ	Function / importance
1	 Bones	Supports a body, protects organs inside in the Vertebrates.
2	 Muscles Tissue	Movement. pull on the bones.
3	 Brain/ spinal cord/ Nerves/ sense organs.	Control all body.
4	 1-Gills 2-Lungs 3-Skin	Bring O2 to the blood and removes wastes, like CO2
5	 Heart, blood, blood, vessels.	Move blood through body
6	 Liver, kidneys bladder, skin, lungs.	Remove the wastes from body.
7	 Different. But In Human:	Break down food.

Q8 : fill the missing words: your book1 page 65-66 اكتب اسم العضو على شكل الجهاز الهضمي واكمل

الجدول



Label the parts of the digestive system and colour all parts with different color, complet the table with corret answer.

Digestive System	Main Function
1- Mouth	Chewing and down
2-	Swallowing and transporting food.
3-	Acidic juices down food more.
4- Intestine.	Nutrients are absorbed into
5- Large	Removes water from
6-	

Q9: Select the correct answer: اختر الإجابة الصحيحة من بين البدائل المتاحة

1. All living things:

- a) Reproduce, grow, use food for energy, get rid of waste, and react to changes
b) Reproduce and grow only. c) Eat, sleep, drink only.

2. When we classify something, we put it into:

- a) groups b) colours c) shapes.

3-What does make "chloroplast" look green?

- a) Chlorophyll b) nucleus c) vacuole

4-The instrument that we use to see cells is called a:

- a) hand lens b) microscope c) thermometer

5-What kingdom do mushrooms belong to?

- a. Fungi b. Plant c. Archaea**

6-The organisms in the kingdom have chloroplasts as part of their cell structure.

- a- Animals b-bacteria c-Plant**

7-Protozoa belong in the kingdom

- a. Protista. b. Animal. c. Plant**

8-Amoeba and paramecium belong to which kingdom?

- a. animal b. plant c. protest**

9-Which kingdom includes camels and sponges?

- a. Plant b. Protista c. Animal**

10-Which organism is part of the Plant kingdom?

- a. Mushroom b. cat c Trees**

11-The stomach is part of which body system:

- a- digestive b- nervous c- skeletal**

12-The excretory system:

- a- breaks down food b-takes in oxygen c-gets rid of waste**

13- Which animals' metamorphosis has a pupa stage?

- a-frogs b-damselflies c- butterflies**

14- An insect molts to: a-Eat b-fly c-grow

15-What does absorb nutrients into blood?

- a) Stomach b) small intestine c) mouth**

16-What transfers food from mouth to stomach?

- b) stomach b) small intestine c) esophagus**

17-What removes solid waste from unused food?

- c) Stomach B) large intestine c) mouth**

19-Which two kingdoms do NOT have a nucleus?

- a) fungi and plants b) bacteria and archaea c) animals and Protists

20-The system that helps animals to breathe is called the:

- a) circulatory system b) excretory system c) respiratory system

21-Which organ pumps blood around the body? A. Brain B. Stomach C. Heart

Q10: Select the right answer from parenthesis: اختر الصحيح من بين القوسين

22-Kidney is (tissue \ organ) 23-Muscle is (tissue \ organ)

24-Animals have simple body, no systems (vertebrate \ invertebrate)

25-Damselfly, go under (complete \ incomplete) metamorphosis

26-Beetleflies go under (complete \ incomplete) metamorphosis

27-The stages of growth is called (life cycle \ life span)

28-How long an organism can live in wild is called (life span \ life cycle)

Q11: Reorder the four stages of a human life cycle?

(Grow / Birth / Death / Reproduction)

1..... 2..... 3..... 4.....

Q12: -What kind of reproduction is happening in each picture?

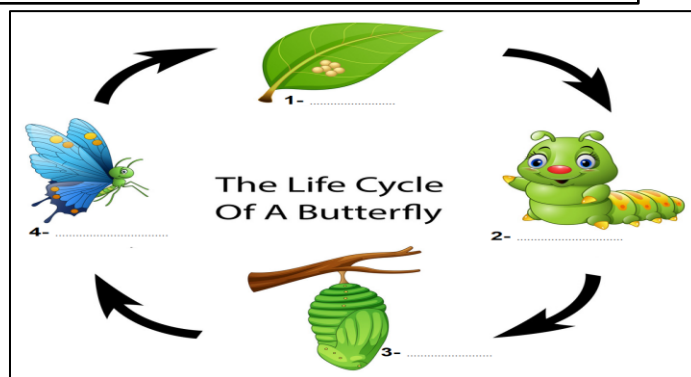
(Budding / Fertilization / Regeneration) used this words



Q13-Put the stages of a butterfly's life cycle

in order :

(Adult / Egg / pupa / larva)



Q14: Look at the pictures and write down

whether the picture you see is:

(1-Inherited behavior) Or (2- Learned behavior)



Answer Science Grade 4 Semester 1 Book Part 1 Review

NAME _____ GRADE 4/____ DATE..../11

Q1: Fill each blank with the best term from the list: for all chapters:

A- (Scientific method / experiment / hypothesis / Variable) ضع الكلمة بجوار التعريف

- 1-A process that scientists use to answer questions **Scientific methods**
- 2-Is something that changes or varies **Variable**.
- 3-A **Hypothesis** statement that can be tested to answer questions.
- 4-An **Experiment** is a scientific test that can be used to support a hypothesis.

B- (Cell / kingdom / viruses / organ / organism / tissue) ضع الكلمة بجوار التعريف

1. The smallest unit of living matter is a **Cell**
2. The largest group into which an organism can be classified is a **Kingdom**
3. Tissues group together to form a(n) **Organ**.
4. A group of similar cells that do a job together is called **Tissue**.
5. Anything that can carry out the five basic life functions is a(n) **organism**
- 6- A(n) **viruses** is a non-living particle that depends on and infects the cells of an organism.

B1: Fill in the missing words. Use the words below to help you:

(Cell wall/ chloroplasts / different / nucleus) ضع الكلمة بجوار التعريف

- 1-Animal cells and plant cells are **different**
- 2-The plant cell has **Chloroplast** and **a cell wall**
- 3-The **Nucleus** is the brain of the cell.

B2: Fill in the missing words. Use the words below to help you: ضع الكلمة بجوار التعريف

(Reproduction / oxygen / controls/ chloroplast / energy).

- 1-All living things need a gas, it is found in air and in water, it is **Oxygen**
- 2-To make more of the same kids from living things is reproduction
- 3-Most plant cells have green parts called **chloroplast** it help Plants to make Food.
- 4- A nucleus **controls**. the cell activates.
- 5- Mitochondrion It gets **energy** from food.

□

B3: -Arrange from the smallest to the largest (life organization)رتب مستويات التنظيم للجسم

{ tissue cell system organ }

1- Cell 2- Tissue 3- organ 4- system

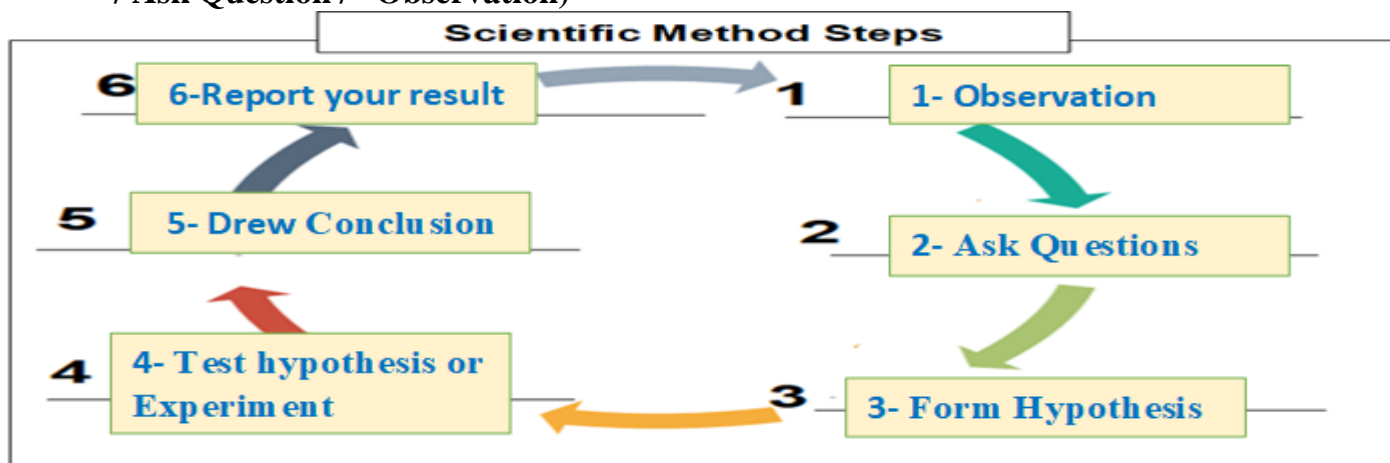
ضع الكلمة بجوار التعريف

C-(Digestive system / metamorphosis / Oxygen/ nervous system / instinct / heredity)

1. Food is broken down by the **Digestive system**
2. Butterflies go through a process of change called **metamorphosis**
3. The brain and sense organs are part of an animal's **Nervous system**.
4. Traits are passed from parent to offspring through **heredity**
5. A **instinct** is a behavior that an animal does not have to learn.
- 6- Red blood cells carry **oxygen** through the body.

Q2: Reorder the scientific Method steps and write on diagram below: رتب خطوات المنهج العلمي

1. (Report your result / Test hypothesis or Experiment // drew Conclusion/ Form Hypothesis / Ask Question / Observation)



Q3 : Match group A to correct answer from Group B: ضع رقم التركيب المناسب بجوار الوظيفة

Group A

- 1-Cell wall
- 2-Mitochondrion
- 3-Nucloes
- 4-Cell Membrane
- 5-Chloroplast
- 6-Cytoplasm
- 7-Vacouls

Group B

- (5)Food factory in plant cell has chlorophyll
- (6)Filling cell, jelly, mostly water.
- (7)Stores cell food, water, wastes.
- (1)Protect & support plant cell.
- (2)Food is burned in it to give energy.
- (3)Controls all cell activities.
- (4)Thin covering outside animal cell, after cell wall in plant cell.

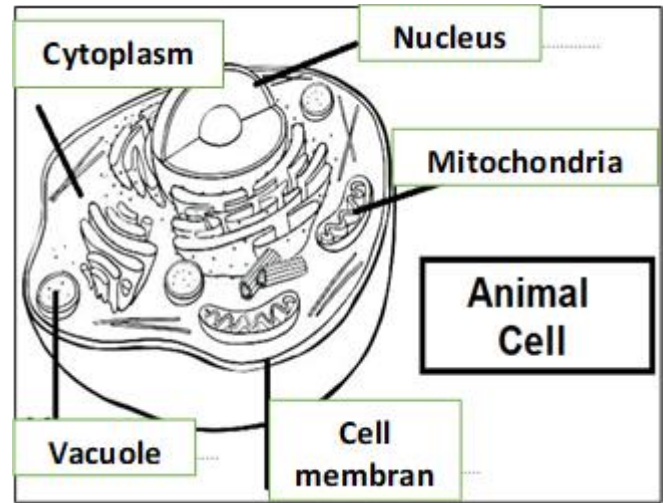
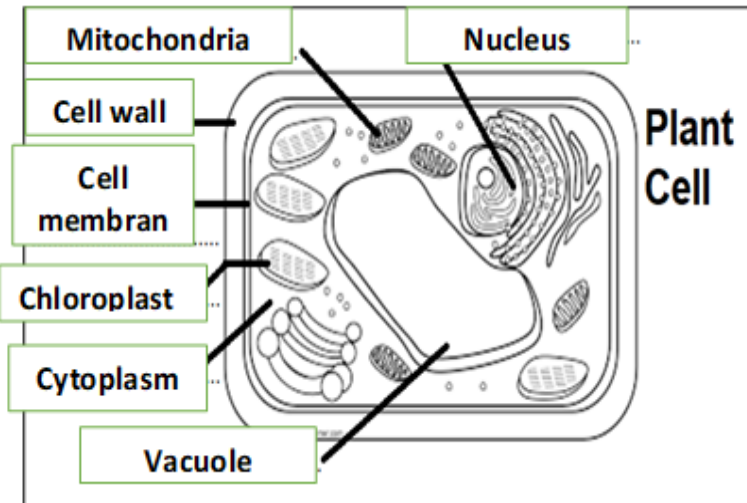
Q4 : What is these organisms' Genus and Species Name? (Binomial name) اكتب الاسم الثنائي

- 1- *Phoenix dactylifera*
- 2- *Felis catus*

Genus	<i>Phoenix</i>	<i>Felis</i>
Species	<i>dactylifera</i>	<i>catus</i>

Q5: Label the plant and animal cells using the words below to help you: ضع اسم التركيب بمكانه المناسب:

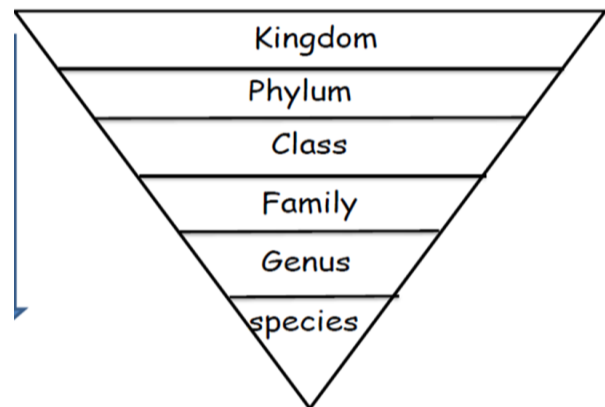
{ Cell wall/ Nucleus/ Mitochondria /Chloroplast /Cytoplasm / Cell membrane / Vacuole}



Q6 : Put the words in order of grouping from

largest to smallest: رتب مستويات تنظيم المملكة:

(Kingdom / Family / Species / Order / Class / Phylum / Genus)



Kingdom	Archaea	Bacteria	Protista	Fungi	Plants	Animals
Number of Cell	1	1	1 or more	1 or more	many	many
Nucleus	No	No	yes	yes	yes	yes
Food	Make food, get from other organisms.	Make food, get from other organisms.	Make food, get from other organisms.	get from other organisms.	Make their own food,	get from other organisms.
Move	yes	yes	yes	No	No	yes
Example		bacteria	Mushroom / yeast	Algae/ paramecium	trees	Lion/ camel

Q7 : Write the name of system: اكتب اسم الجهاز بمكانه الصحيح

	System Name	Organ	Function / importance
1	Skeleton System	Bones	Supports a body, protects organs inside in the Vertebrates.
2	Muscular System	Muscles Tissue	Movement. pull on the bones.
3	Nervous System	Brain/ spinal cord/ Nerves/ sense organs.	Control all body.
4	Respiratory System	1-Gills 2-Lungs 3-Skin	Bring O2 to the blood and removes wastes, like CO2
5	Circulatory System	Heart, blood, blood, vessels.	Move blood through body
6	Excretory System	Liver, kidneys bladder, skin, lungs.	Remove the wastes from body.
7	Digestive System	Different. But In Human:	Break down food.

Q8 : fill the missing words: your book1 page 65-66 اكتب اسم العضو على شكل الجهاز الهضمي واكمل

الجدول

1- Mouth

2- Esophagus

3- Stomach

4- Small Intestine

6- Anus

Large Intestine

Label the parts of the digestive system and colour all parts with different color, complet the table with corret answer.

Digestive System	Main Function
Mouth	Chewing and breaking down food
Esophagus	Swallowing and transporting food.
Stomach	Acidic juices help break down food more
Small Intestine.	Nutrients are absorbed into ... Blood ...
Large Intestine	Removes water from Unused food

Q9: Select the correct answer: اختر الإجابة الصحيحة من بين البدائل المتاحة

1. All living things:

- a) Reproduce, grow, use food for energy, get rid of waste, and react to changes
b) Reproduce and grow only. c) Eat, sleep, drink only.

2. When we classify something, we put it into:

- a) groups b) colours c) shapes.

3-What dose make "chloroplast" looks green?

- a) Chlorophyll b) nucleus c) vacuole

4-The instrument that we use to see cells is called a:

- a) hand lens b) microscope c) thermometer

5-What kingdom do mushrooms belong to?

- a. Fungi b. Plant c. Archaea

6-The organisms in the kingdom have chloroplasts as part of their cell structure.

- a- Animals b-bacteria c-Plant

7-Protozoa belong in the kingdom

- a. Protista. b. Animal. c. Plant

8-Amoeba and paramecium belong to which kingdom?

- a. animal b. plant c. protest

9-Which kingdom includes camels and sponges?

- a. Plant b. Protista c. Animal

10-Which organism is part of the Plant kingdom?

- a. Mushroom b. cat c) Trees

11-The stomach is part of which body system:

- a- digestive b- nervous c- skeletal

12-The excretory system:

- a- breaks down food b-takes in oxygen c- gets rid of waste

13- Which animals' metamorphosis has a pupa stage?

- a-frogs b-damsel flies c- butterflies

- 14- An insect molts to: a-Eat b-fly c- grow

15-What dose absorb nutrients into blood?

- a) Stomach b) small intestine c) mouth

16-What transfer food from mouth to stomach?

- b) stomach b) small intestine c) esophagus

17-What remove solid waste from unused food?

c) Stomach

B) large intestine

c) mouth

18-Mushrooms are in the kingdom of:

a) animals

b) plants

c) fungi

19-Which two kingdoms do NOT have a nucleus?

a) fungi and plants

b) bacteria and archaea

c) animals and Protists

20-The system that helps animals to breathe is called the:

a) circulatory system

b) excretory system

c) respiratory system

21-Which organ pumps blood around the body?

A. Brain

B. Stomach

C. Heart

Q10: Select the right answer from parenthesis: اختر الصحيح من بين القوسين

22-Kidney is (tissue **organ**)

23-Muscle is (**tissue** \ organ)

24-Heart is (**tissue** \ organ)

25-Animals have simple body, no systems (**vertebrate** \ **invertebrate**)

26-Damselfly, go under (**complete** \ **incomplete**) metamorphosis

27-Beetleflies go under (**complete** \ **incomplete**) metamorphosis

28-The stages of growth is called (**life cycle** \ life span)

29-How long an organism can live in wild is called (**life span** \ life cycle)

Q11: Reorder the four stages of a human life cycle?

(Grow / Birth / Death / Reproduction)

1-Birth

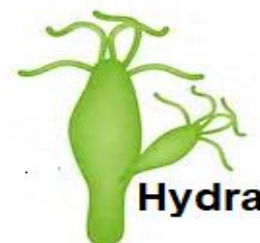
2- Grow

3- Reproduction

4- Death

Q12: -What kind of reproduction is happening in each picture?

(Budding / Fertilization / Regeneration) used this words

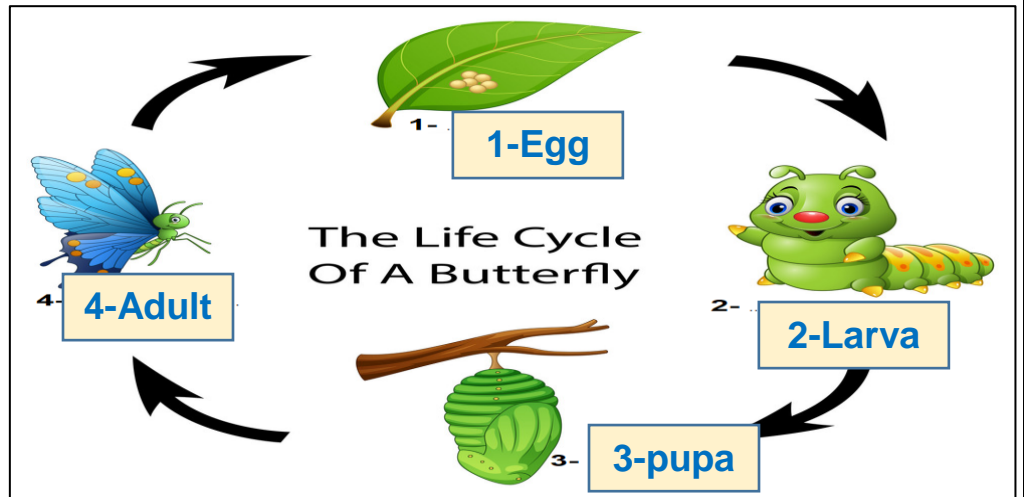


(... **Fertilization** ...)

(... **Regeneration** ...)

(... **Budding** ...)

Q13-Put the stages of a butterfly's life cycle in order :
(Adult / Egg / pupa / larva)



Q14: Look at the pictures and write down whether the picture you see is:
(1-Inherited behavior) Or (2- Learned behavior)



Done By
Arwa Al Mussabi
Science Teacher 2019/2020